

Shock Absorber Triumph Tiger 800 XC

TR 1201


Spare Parts List




Safety Precautions

Note!


The shock absorber is a very important part of the vehicle and will therefore affect the stability of the vehicle.


 Read and make sure that you understand the information in this manual and the mounting instructions before you use this product. If you have any questions regarding installation or maintenance please contact your nearest Öhlins dealer.

 Öhlins Racing AB can not be held responsible for any damage to the shock absorber, vehicle, other property or injury to persons, if the instructions for installing and maintenance are not followed exactly.

Warning!


This product was developed and designed exclusively for a specific vehicle model and should only be installed on the intended vehicle model in its original condition as delivered from the vehicle manufacturer.

 This product contains pressurized nitrogen gas (N²). Do not open, service or modify this product without proper education (authorized Öhlins dealer/distributor) or proper tools.

 After installing this product, take a test ride at low speed to make sure that your vehicle has maintained its stability.

Note!

When working on this product, always consult your Vehicle Service Manual.

 This Manual should be considered as a part of the product and should therefore accompany the product throughout its life cycle.

Safety Symbols

In this manual, mounting instructions and other technical documents, important information concerning safety is distinguished by the following symbols:



The Safety Alert Symbol means: Warning! Your safety is involved.

Warning!

The Warning Symbol means: Failure to follow warning instructions can result in severe or fatal injury to anyone working with, inspecting or using the shock absorber, or to bystanders.

Caution!

The Caution Symbol means: Special precautions must be taken to avoid damage to the shock absorber.

Note!

The Note Symbol indicates information that is important regarding procedures.

© Öhlins Racing AB. All rights reserved. Any reprinting or unauthorized use without the written permission of Öhlins Racing AB is prohibited.
Printed in Sweden.

| Pos | Part No. | Pcs | Description | Type/Remarks |
|------|----------|-----|-----------------------|--------------|
| 1-11 | 01016-01 | 2 | Seal rebound adjuster | |
| 1-12 | 01128-01 | 1 | Adjustment knob | |
| 1-13 | 01030-01 | 1 | Pin | |
| 1-14 | 01017-01 | 1 | Stop washer | |
| 1-15 | 01052-40 | 1 | End bracket | |

Fig.1

End eye

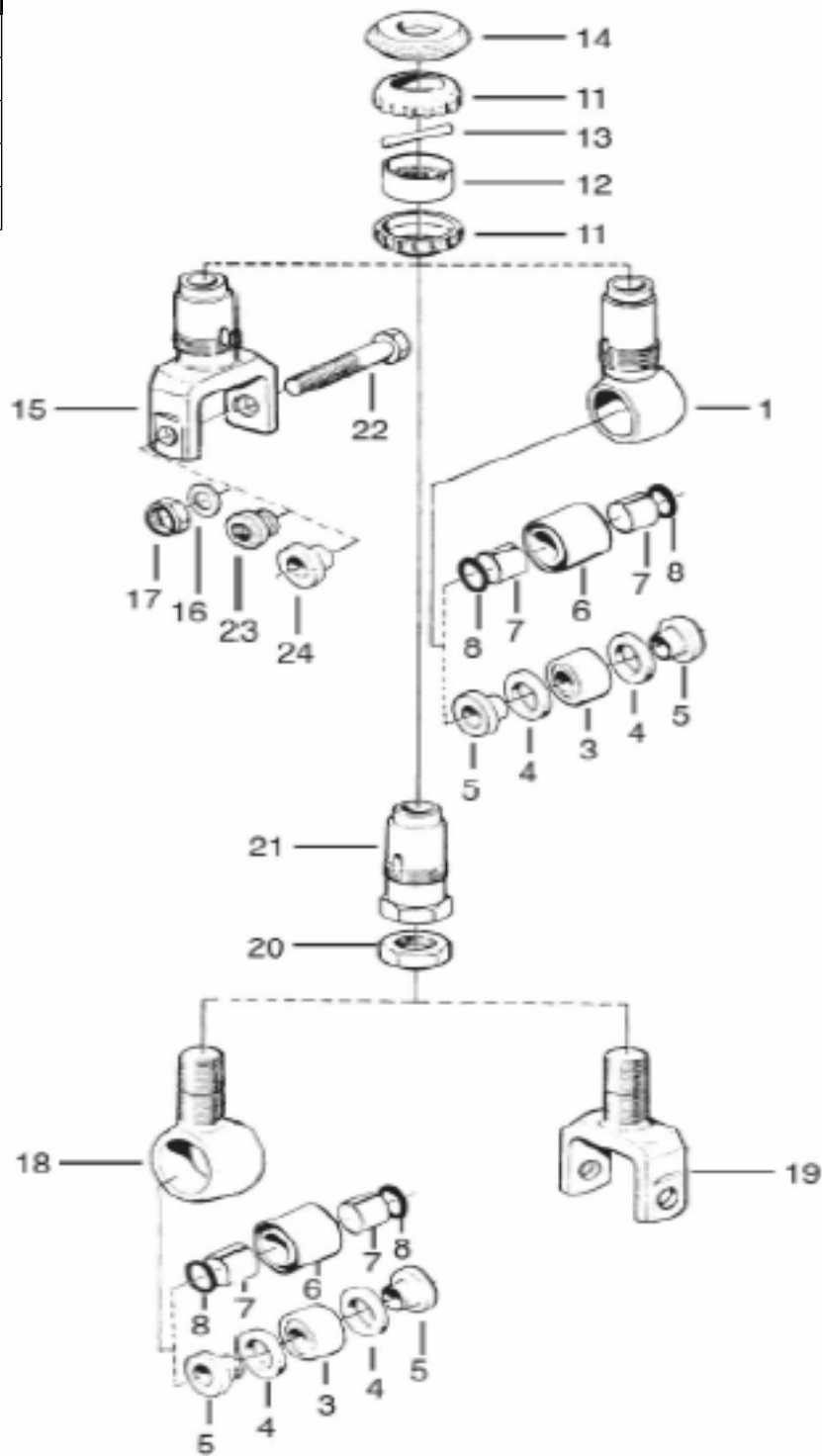
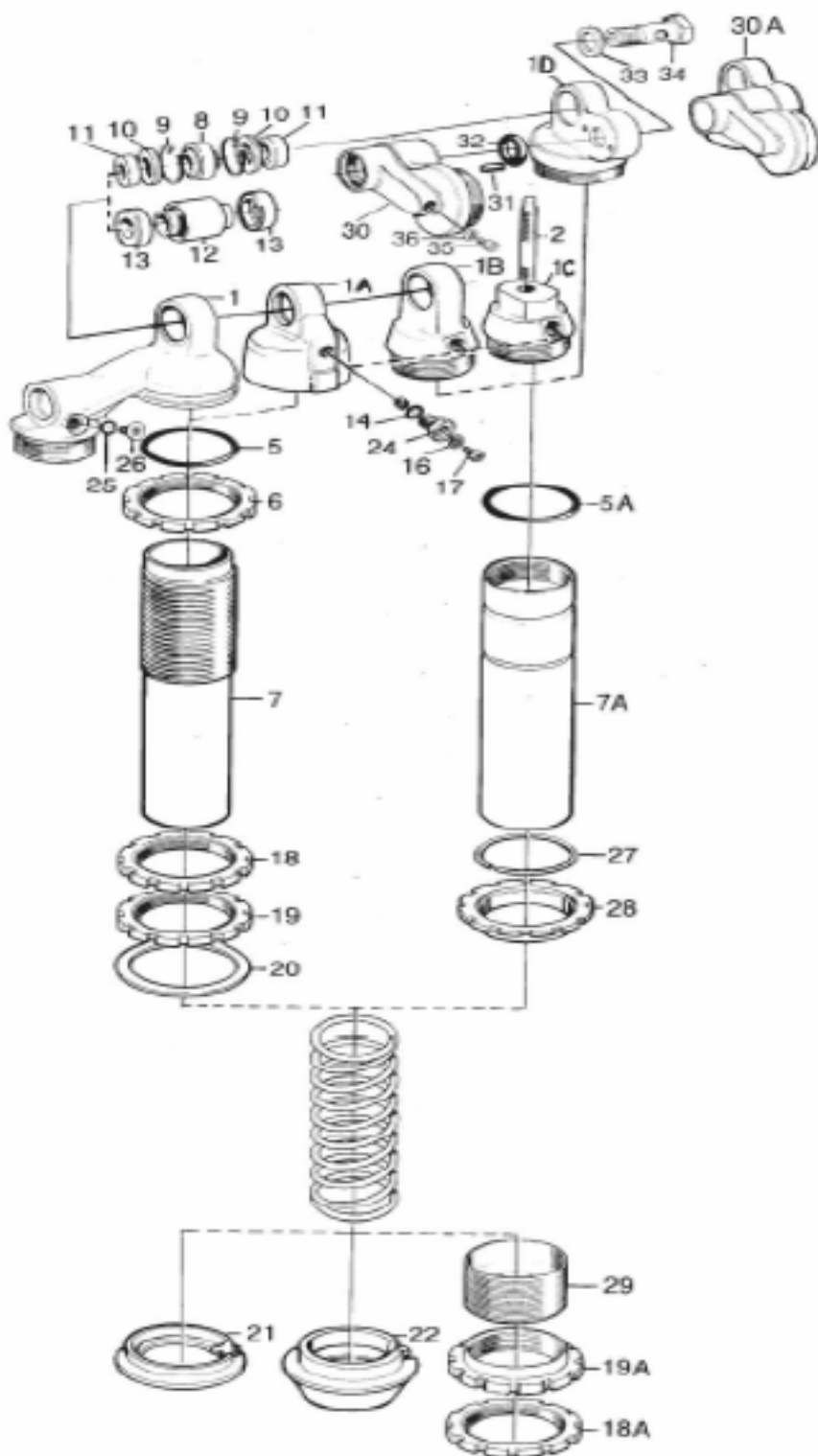


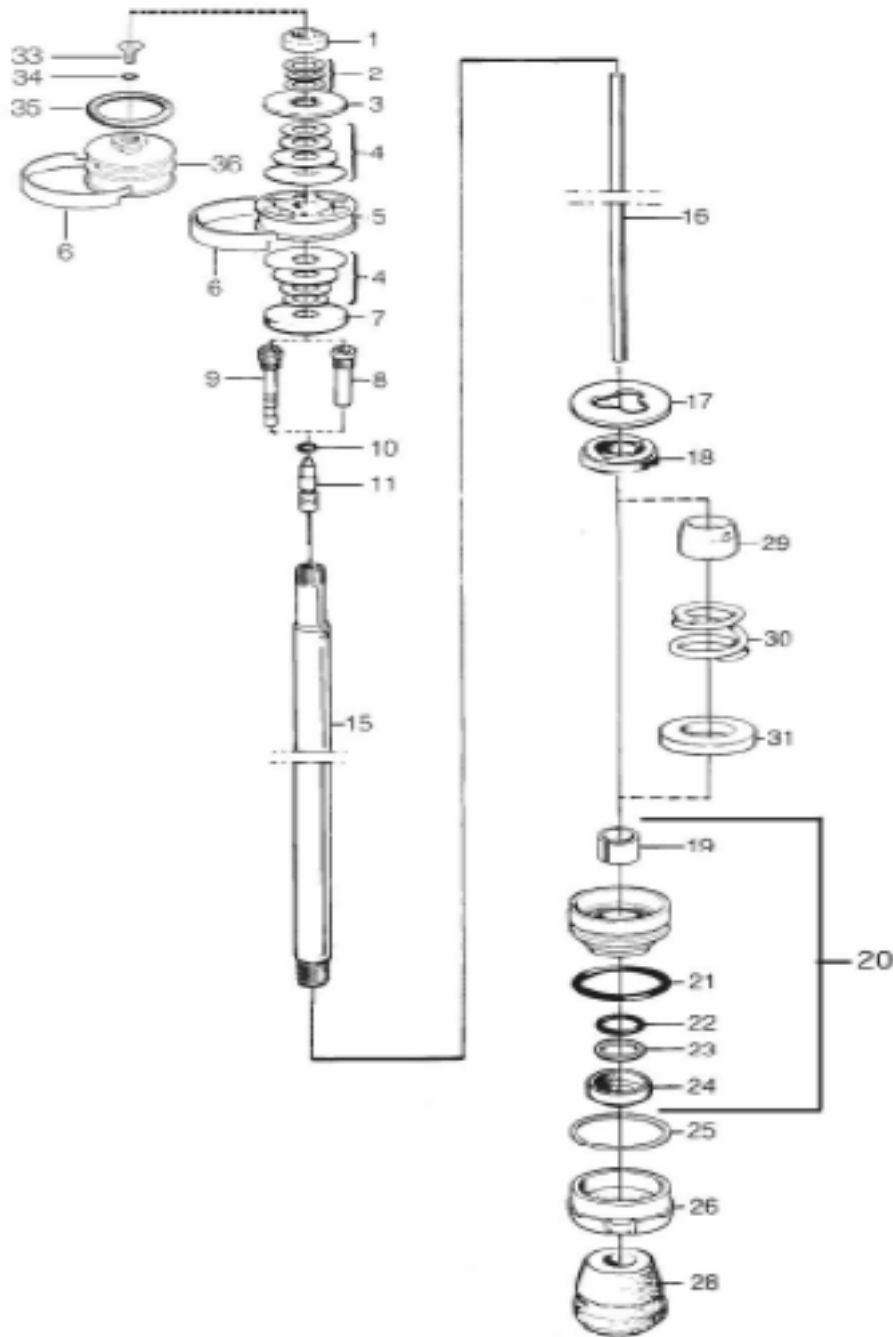
Fig.2 Cylinder head/tube

| Pos | Part No. | Pcs | Description | Type/Re- marks |
|------|----------|-----|---------------|-------------------|
| 2-1 | 00570-01 | 1 | Cylinder head | |
| 2-5 | 00338-37 | 1 | O-ring | |
| 2-7 | 04210-40 | 1 | Cylinder tube | |
| 2-8 | 00536-13 | 1 | Ball joint | |
| 2-10 | 00534-01 | 2 | Seal | |
| 2-11 | 01218-12 | 2 | Spacer | |
| 2-20 | 00543-01 | 1 | Washer | |
| 2-22 | 01286-01 | 1 | Spring clip | |
| | 01099-31 | 1 | Spring | |



Shaft assy

Fig.3



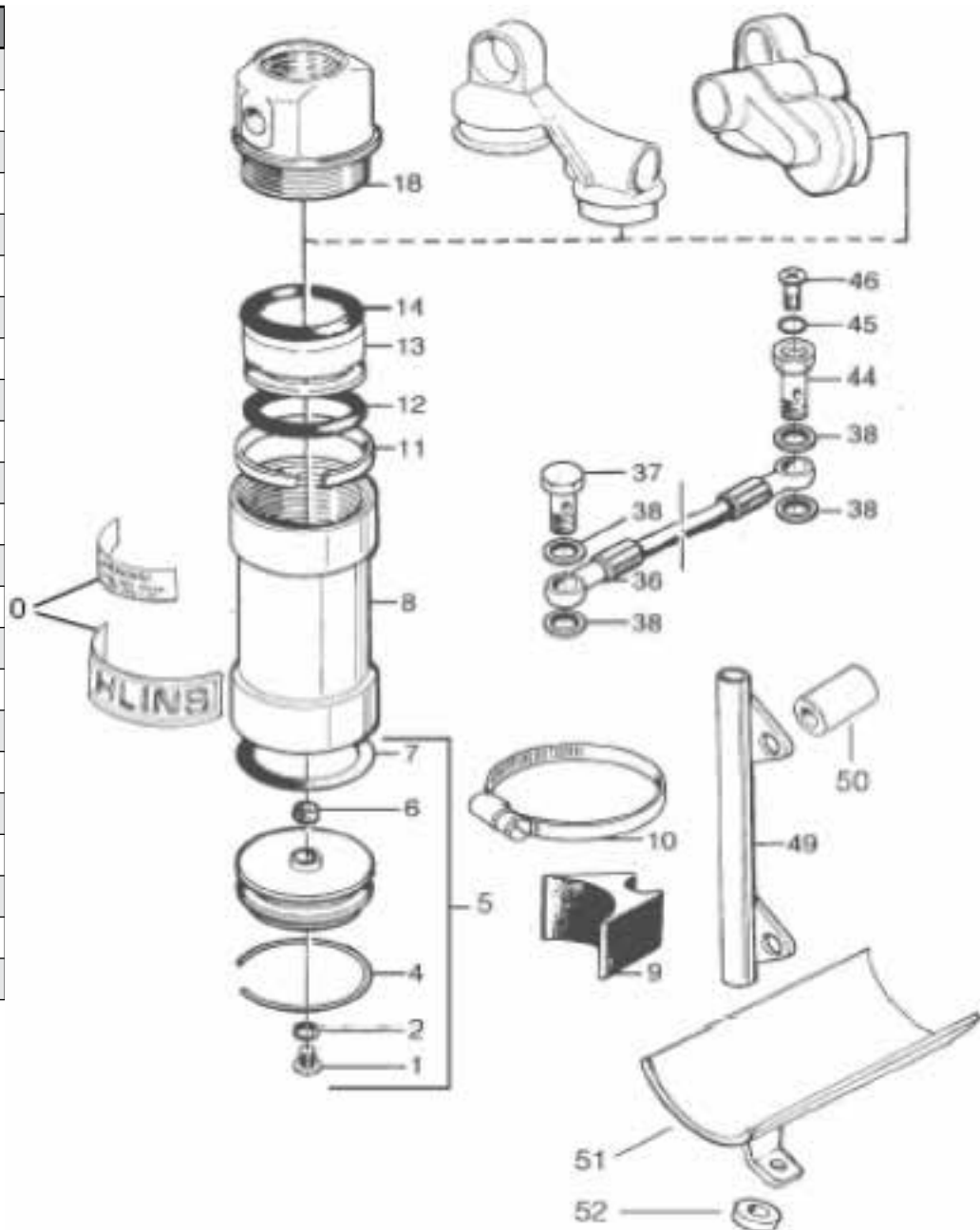
| Pos | Part No. | Pcs | Description | Type/Remarks |
|------|----------|-----|---------------------|--------------|
| 3-1 | 00539-01 | 1 | Lock nut | |
| 3-2 | 00578-01 | 4 | Washer | |
| 3-3 | 00519-05 | 1 | Valve stop | |
| 3-4 | | | Shims See spec.card | |
| 3-5 | 01114-14 | 1 | Piston | |
| 3-6 | 00541-01 | 1 | Piston ring | |
| 3-7 | 00519-04 | 1 | Valve stop | |
| 3-9 | 05666-18 | 1 | Shaft jet | |
| 3-10 | 00338-14 | 1 | O-ring | |
| 3-11 | 05655-03 | 1 | Adjustment needle | |
| 3-15 | 05500-09 | 1 | Shaft | |
| 3-16 | 00566-30 | 1 | Adjustment shaft | |
| 3-17 | 01069-03 | 1 | Spacer | |
| 3-17 | 01069-10 | 1 | Spacer | |
| 3-18 | 03067-03 | 1 | Stop rubber | |
| | 04752-03 | 1 | Washer | |
| 3-19 | 01056-14 | 1 | Bushing | |
| 3-20 | 05129-09 | 1 | Seal head assy | |
| 3-21 | 00338-46 | 1 | O-ring | |
| 3-22 | 04717-03 | 1 | Seal | |
| 3-23 | 01032-23 | 1 | Back up ring | |
| | 04729-04 | 1 | Shim | |
| 3-24 | 01031-02 | 1 | Scraper | |
| 3-25 | 00575-01 | 1 | Circlip | |
| 3-26 | 01065-31 | 1 | End cap | |
| 3-28 | 00563-02 | 1 | Bump rubber | |

SPARE PARTS LIST TR 1201

| Pos | Part No. | Pcs | Description |
|------|----------|-----|--------------------|
| 4-0 | 00191-02 | 1 | Sticker "Öhlins" |
| 4-0 | 00196-01 | 1 | Sticker "Warning" |
| 4-1 | 01050-01 | 1 | Screw |
| 4-2 | 00338-59 | 1 | O-ring |
| 4-4 | 00329-01 | 1 | Circlip |
| 4-5 | 00161-03 | 1 | Reservoir top assy |
| 4-7 | 00338-04 | 1 | O-ring |
| 4-8 | 00302-01 | 1 | Reservoir |
| 4-10 | 00643-02 | 2 | Hose clamp |
| 4-11 | 00340-01 | 1 | Teflon band |
| 4-12 | 00338-26 | 1 | O-ring |
| 4-13 | 00305-01 | 1 | Reservoir piston |
| 4-14 | 00338-24 | 1 | O-ring |
| 4-18 | 00862-02 | 1 | Reservoir end |
| 4-36 | 00637-20 | 1 | Hose </td |
| 4-37 | 00631-01 | 1 | Banjo bolt |
| 4-38 | 00586-01 | 4 | Seal washer |
| 4-44 | 00631-02 | 1 | Banjo bolt |
| 4-45 | 00438-33 | 1 | O-ring |
| 4-46 | 00382-07 | 1 | Screw |
| | 03102-08 | 1 | Reservoir clamp |
| | 05404-03 | 2 | Screw M6x20 |
| | 00382-16 | 1 | Screw M6x14 |

Fig.4

Reservoir/Hose



| Pos | Part No. | Pcs | Description | Type/Remarks |
|------|----------|-----|-----------------------|--------------|
| 5-1 | 03611-01 | 1 | Support ring | |
| 5-2 | 00338-90 | 1 | O-ring | |
| 5-3 | 03607-01 | 1 | Preload housing | |
| 5-4 | 00338-90 | 1 | O-ring | |
| 5-5 | 03610-01 | 1 | Support ring | |
| 5-6 | 03606-01 | 1 | Inner sleeve | |
| 5-7 | 03609-01 | 1 | Lock nut | |
| 5-8 | 03608-01 | 1 | Guide nut | |
| 5-9 | 03613-01 | 1 | Pin | |
| 5-10 | 01047-06 | 1 | Hose | |
| 5-11 | 01048-01 | 1 | Seal washer | |
| 5-12 | 03600-02 | 1 | Adj. cylinder | |
| 5-13 | 00338-79 | 1 | O-ring | |
| 5-14 | 00382-07 | 1 | Screw | |
| 5-15 | 03601-02 | 1 | Guide screw | |
| | 03614-01 | 1 | Seal washer | |
| 5-16 | 03604-02 | 1 | Piston | |
| 5-17 | 00338-71 | 1 | O-ring | |
| 5-18 | 03602-02 | 1 | Adj. screw | |
| 5-19 | 03083-01 | 1 | Spring | |
| 5-20 | 00884-03 | 1 | Ball | |
| 5-21 | 00131-03 | 1 | Circlip | |
| 5-22 | 03072-02 | 1 | Thrust washer | |
| 5-23 | 01023-02 | 1 | Thrust needle bearing | |
| 5-24 | 03073-02 | 1 | Thrust washer | |
| 5-25 | 03603-01 | 1 | Cover | |
| 5-26 | 00338-88 | 1 | O-ring | |
| 5-27 | 03605-01 | 1 | Knob | |
| 5-28 | 00382-08 | 1 | Screw | |

Fig.5 Preload housing assy

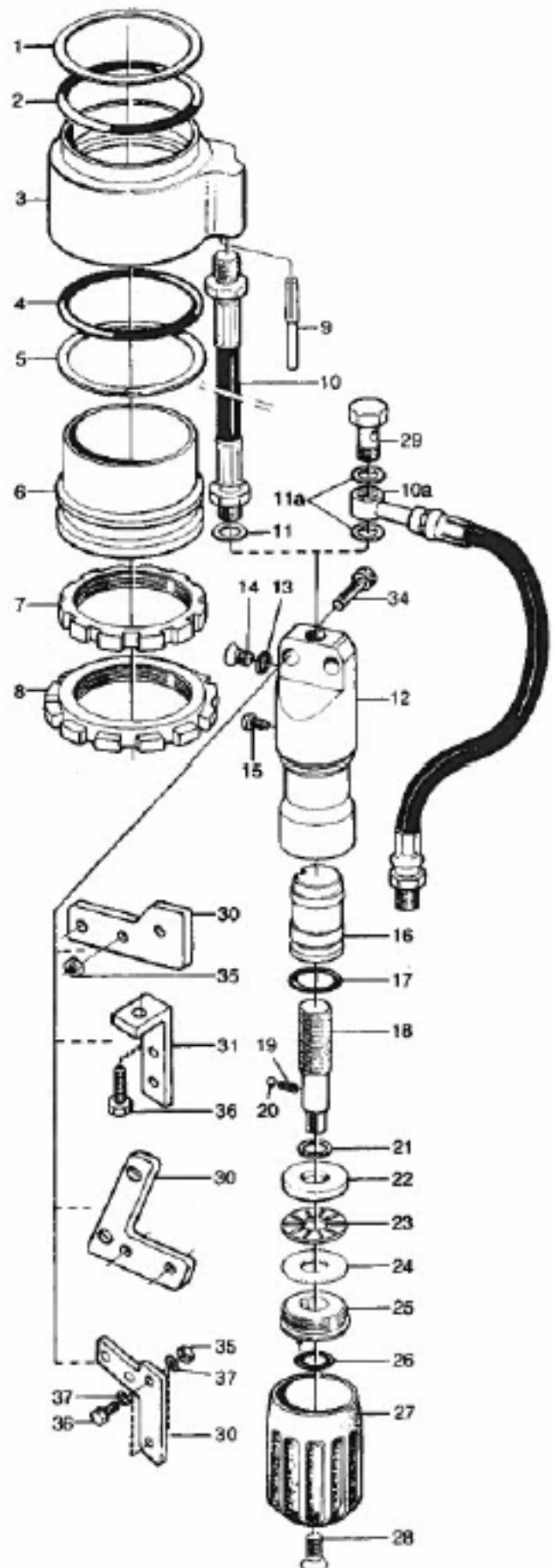
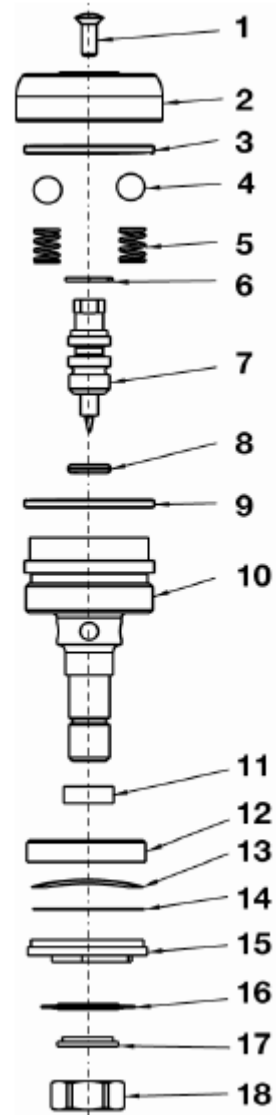


Fig.6

Comp. adjuster

| Pos | Part No. | Pcs | Description | Type/Remarks |
|------|----------|-----|---------------------|--------------|
| 6-1 | 00828-01 | 1 | Screw | |
| 6-2 | 00820-02 | 1 | Knob adj. comp. | |
| 6-4 | 00884-07 | 2 | Ball | |
| 6-5 | 00833-01 | 2 | Spring | |
| 6-6 | 01473-06 | 1 | Circlip | |
| 6-7 | 01242-06 | 1 | Adjustment needle | |
| 6-8 | 00338-79 | 1 | O-ring | |
| 6-9 | 00338-27 | 1 | O-ring | |
| 6-10 | 01243-08 | 1 | End piece | |
| 6-12 | 01247-01 | 1 | Check valve housing | |
| 6-13 | 01246-01 | 1 | Wave washer | |
| 6-14 | 01245-01 | 1 | Check valve shim | |
| 6-15 | 01244-05 | 1 | Valve | |
| 6-16 | | | Shim see spec.card | |
| 6-17 | 00641-01 | 1 | Washer | |
| 6-18 | 00430-07 | 1 | Nut | |



Your Öhlins retailer:



Öhlins Racing AB
Box 722
SE-194 27, Upplands Väsby
Sweden

Phone: +46 (0)8 590 025 00
Fax: +46 (0)8 590 025 80
www.ohlins.com



www.ohlins.com